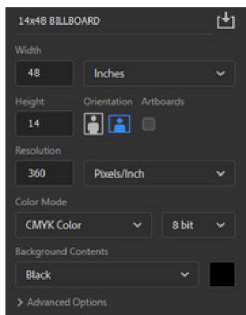


# GRAPHIC SET UP

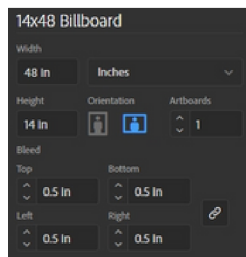


[Upload Link](#)  
[Click Here](#)



## Photoshop File

- Open a new document.
- Set your width and height scaled at 1 inch = 1 foot. Do not add bleed
- Set your resolution to a minimum of 360 dpi.
- Set your resolution to 720 dpi for high resolution print upgrades.
- Set your document color mode to CMYK, and the color profile is set to US Web Coated (SWOP) v2 . Do not send files in RGB mode.
- Once artwork is complete, flatten all layers and save as a Tiff with LZW Compression.



## Illustrator

- Open a new document.
- Set your width and height scaled at 1 inch = 1 foot.
- Set a 1 inch bleed to your document width and height.
- Set your document color mode to CMYK. Do not send files in RGB mode. Your project will be converted to CMYK and there will be a difference in color.
- Save file as a high quality PDF flattened.

## Do Not Send Files in the following formats:



### MICROSOFT WORD

Try to avoid using Word to setup the banner. They usually are troublesome and can not be printed. If Word file is all what you have, add a border proportional to your sign size and make your design inside that border only. When uploading your Word file, include all Fonts used in the files in upload.



### PUBLISHER

Native Publisher files can not be processed or printed. You must save your Publisher file as PDF or high resolution (150dpi or greater) TIFF or JPEG.



### POWERPOINT

Native Powerpoint files can not be processed or printed. You must save your Powerpoint file as PDF or high resolution (150dpi or greater) TIFF or JPEG.



### COREL PRODUCTS

Native Corel files can not be processed or printed. You must save your Corel file as PDF or EPS or high resolution (150dpi or greater) TIFF or JPEG

# GRAPHIC SET UP



[Upload Link](#)  
[Click Here](#)



## Billboard Artwork Setup

- The illustration size represents the actual image area of the billboard.
- We bleed your background by 6" on all four sides.
- This makes the overall vinyl size 1' larger than the image area in both height and width.

Billboard artwork needs to be 300dpi / CMYK. If your artwork is setup in RGB then we convert to CMYK automatically. Please note computer screens represent colors differently.

### Standard Billboard Finishing for Vinyls



#### 6" Bleed Printed on all 4 Sides

■ Live Area

■ Finished Size / This is your wrap and pockets



#### TriVisions

■ Live Area is the Finished Size / Straight Cut Edge

## Photoshop File

- Set your width and height scaled at 1 inch = 1 foot. Do not add bleed
- Set your resolution to a minimum of 360 dpi.
- Set your resolution to 720 dpi for high resolution print upgrades.
- Set your document color mode to CMYK, and the color profile is set to US Web Coated (SWOP) v2. Do not send files in RGB mode.
- Once artwork is complete, flatten all layers and save as a Tiff with LZW Compression.

## Illustrator

- Set your width and height scaled at 1 inch = 1 foot.
- Set your document color mode to CMYK. Do not send files in RGB mode. Your project will be converted to CMYK and there will be a difference in color.
- Save file as a high quality PDF flattened.



### Canva

- Click on Create a Design
- Click on Custom Dimensions
- Set your file up in inches.
- Save as a High quality PDF.

## Quick Tip:

Please make sure to use high resolution photos and logos when creating your artwork. If you are unsure about the quality of your artwork...please ask us to take a look to verify for quality. We love to help!

# GRAPHIC SET UP







[Upload Link](#)  
[Click Here](#)

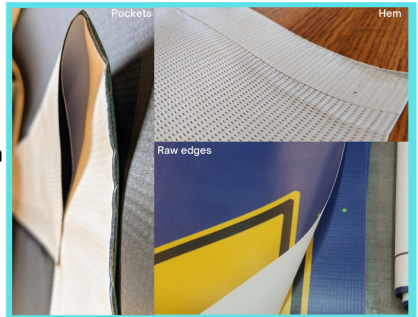


## Banner Artwork Setup

- Send us the [live area](#) of your banner and we will add any additional wrap for pockets or hem in house.

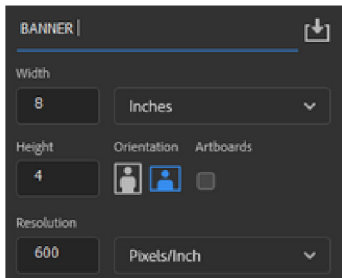
### Typical Finishing

-  Pockets on the top and bottom
-  Pockets included into the live area
-  Hem
-  Raw edges



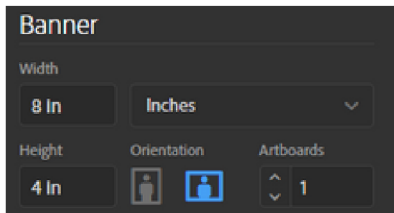
## Photoshop File

- Set your width and height scaled at 1 inch = 1 foot. Do not add bleed
- Set your resolution to a minimum of 360 dpi.
- Set your resolution to 720 dpi for high resolution print upgrades.
- Set your document color mode to CMYK, and the color profile is set to US Web Coated (SWOP) v2 . Do not send files in RGB mode.
- Once artwork is complete, flatten all layers and save as a Tiff with LZW Compression.



## Illustrator

- Set your width and height scaled at 1 inch = 1 foot.
- Set your document color mode to CMYK. Do not send files in RGB mode. Your project will be converted to CMYK and there will be a difference in color.
- Save file as a high quality PDF flattened.



Canva

- Click on Create a Design
- Click on Custom Dimensions
- Set your file up in inches.
- Save as a High quality PDF.